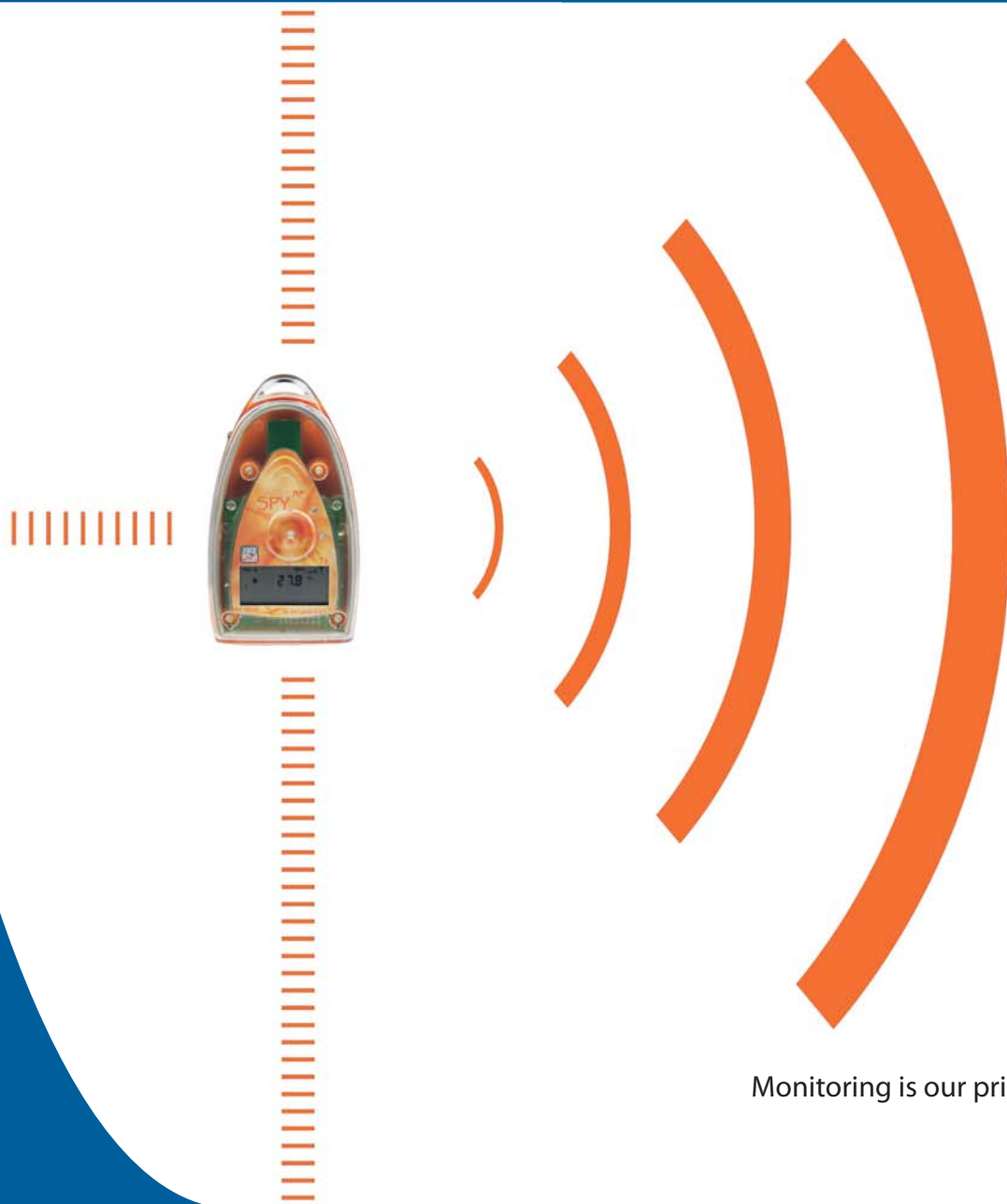


# SPY RF solution, to make your quality assurance simple



Monitoring is our priority



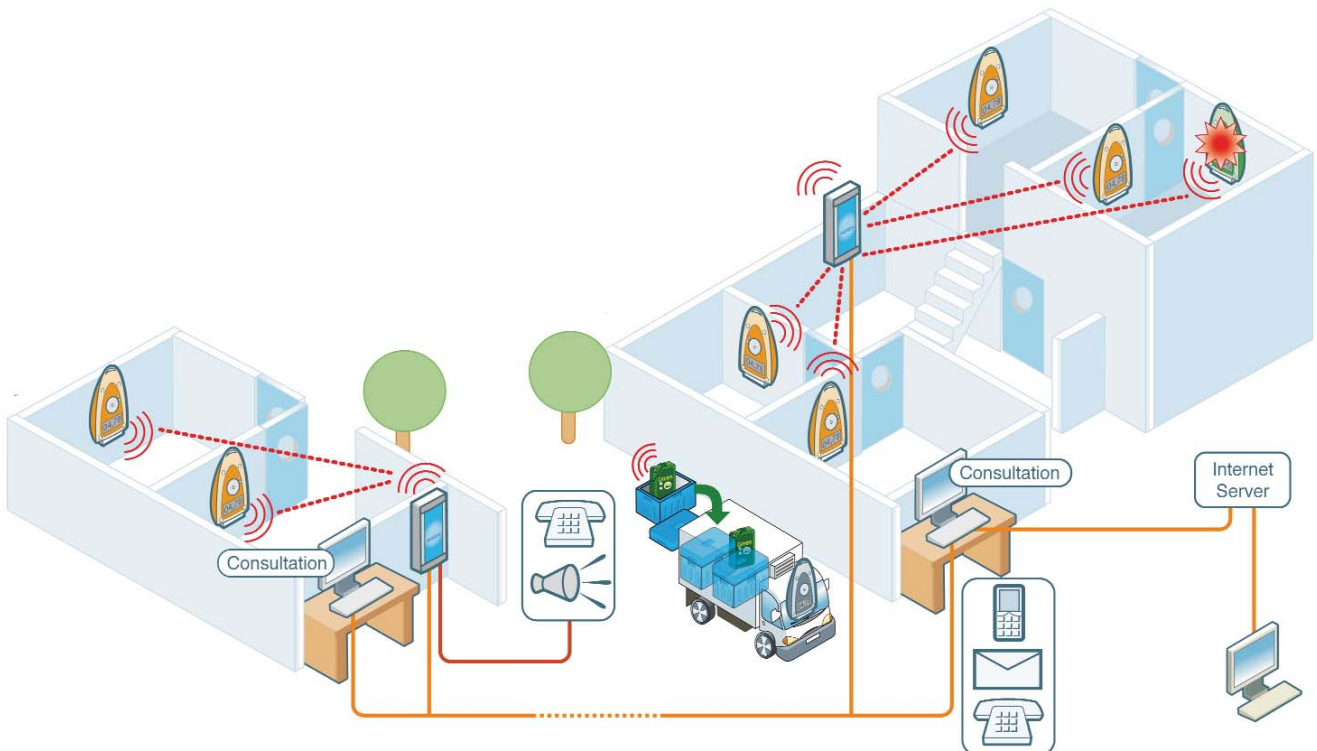
Are your thermo-sensitive products stored at the required temperature?

Are your incubations performed in appropriate conditions?

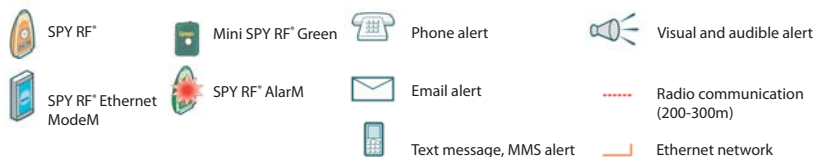
Quality Assurance procedures, requirements from ISO 17025 and ISO 15189 norms, Good Laboratory Practices and local regulations recommend the use of tools to guarantee the reliability of your temperature controlled chambers (refrigerators, freezers, incubators...)  
JRI Maxant, expert for over 160 years in measuring systems, offers independent and automated monitoring solutions that meet your quality requirements.

## How does it work ?

Our monitoring system includes radio frequency recorders which automatically send data to a central server.



## Legend



# SPY RF® recorder

- Measurement and record of physical parameters (temperature, hygrometry, pressure, CO<sub>2</sub>...)
- Direct reading thanks to the display
- Data transfer via Radio Frequency
- Real-time alarm management
- Remote visualization of data
- Fast installation and commissioning
- ISO 17025 Calibration of your probes

- Push button
- LCD screen
- Replaceable battery



- Recording LED
- Alarm LED

Cap and seal

## A range of recorders to meet all your needs



Temperature recorder for refrigerators/ freezers



Temperature and CO<sub>2</sub> recorder for ovens/ incubators



Temperature recorder for cold chambers



Temperature and  $\Delta P$  recorder for clean rooms



Temperature and humidity recorder for climatic chambers



Ultra low temperature recorder for cryogenic tanks / freezers -80° C



Ambient temperature recorder for transport boxes

# Monitoring software satisfying your needs

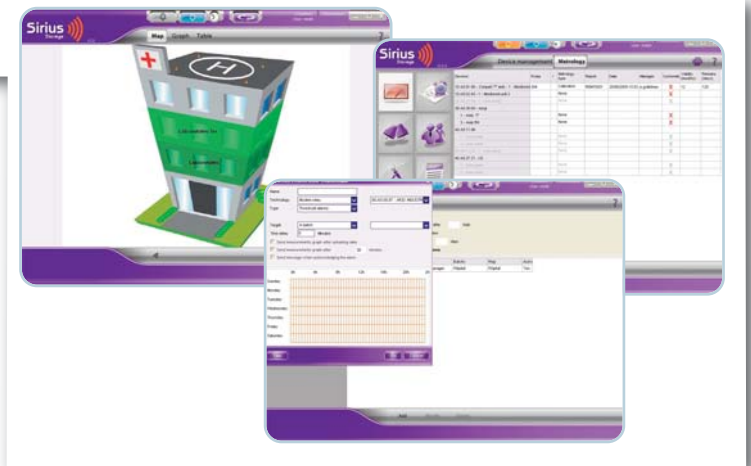
## SIRIUS Lite 2.0 - mono-user

Monitoring software mainly dedicated to small installations. SIRIUS Lite is designed to easily set and manage SPY RF recorders and alerts.



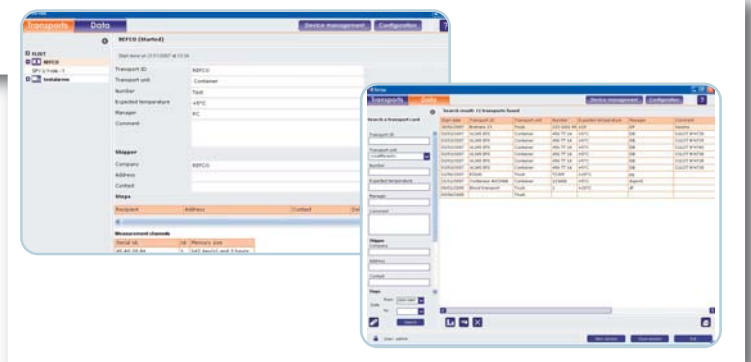
## SIRIUS Storage 2.0 - multi-user

Monitoring software dedicated to multi-site installations. SIRIUS Storage enables to visualize SPY RF® recorders located on the installation map and to manage your alarms. Compliant with the FDA (CFR 21 Part 11), Sirius Storage enables you to manage metrology operations.



## SIRIUS Transport

Software dedicated to the monitoring of thermo-sensitive product transportation. SIRIUS Transport can manage both delivery slips and temperature data of the products. Archival research in the library are facilitated by an integrated search engine.



## Metrolog Calibration

This software will help you to perform your own metrology operations: Calibrations, checking reports and adjustments of your entire SPY RF fleet.



## Field technical service



Calling on many years of experience, our field technicians take on assignments as diverse as on-site qualification of radio communication, installation of probes according to good practice, system parameter settings, preventive and corrective maintenance, on-site metrology, trainings adapted to every level of involvement, and systems qualification (IQ/OQ).

Regular maintenance of your SPY RF system is essential in order to guarantee optimal performance (and a longer lifetime). That is why JRI Maxant offers preventive and curative actions:

- Hardware warranty extension.
- Replacement of failed hardware by standard exchange.
- Access to new software versions and additional training.
- Preventive battery replacement.
- Optimization of radio communications.
- Upgrade of recorders.
- On-site metrology services (calibration and certification).

## Technical Support and Hotline



A technician team is available for our distributors network:

- Remote maintenance of your SPY RF® system.
- Technical hotline.
- Interactive FAQ available on [www.jri-maxant.com](http://www.jri-maxant.com)
- Support of a JRI expert on specific projects

## Metrology services



JRI Maxant has long-standing expertise in the field of quality control of measurement and has a COFRAC accredited laboratory.

The accredited laboratory of JRI Maxant provides temperature calibration certificates in a range from -20° C to +140° C with an uncertainty of  $\pm 0,037^\circ\text{C}$ , and from -80° C to -40° C ( $\pm 0,055^\circ\text{C}$ ) and at -196° C ( $\pm 0,09^\circ\text{C}$ ). Other metrology operations can be performed on all brand equipments in temperature, humidity, CO<sub>2</sub>, pressure, etc... and mapping of chambers or storage areas.

The quality of services provided by our laboratory is audited and confirmed every year by an independent organization, COFRAC. This accreditation corresponds to a commitment on the quality of calibration and a guaranteed uncertainty value.

## New generation of digital probes



For many years, JRI Maxant has been developing and manufacturing digital sensors of high metrological quality to meet the requirements for monitoring thermo-sensitive products.

JRI Maxant digital probes have internal memory to store their adjustment coefficients and metrological data. With these interchangeable measurement chains, they can achieve the calibration of your SPY RF® solution in the COFRAC laboratory without interruption of monitoring by a simple exchange of the probes. This solution is time saving and ensures the accuracy of your calibration operations.

## More information ?



Have a look to a specific case on [www.jri-maxant.com](http://www.jri-maxant.com)



**JRI Maxant**  
Rue de la Voivre  
Parc d'Activités Technoland - BP 51027  
25490 FESCHES LE CHATEL CEDEX - FRANCE  
Tel. : +33(0)3 81 30 68 04  
Fax : +33(0)3 81 30 60 99  
[www.jri-maxant.com](http://www.jri-maxant.com) - E-mail : [info@jri.fr](mailto:info@jri.fr)